



## **SAMDEX SP Z O.O.**

NIP: 8171964542 | KRS: 831376609

E-mail: [biuro@samdex.pl](mailto:biuro@samdex.pl)  
[www.samdex.pl](http://www.samdex.pl)

Bond that lasts

**HIGH QUALITY PROTECTIVE FILMS**

**Inwestorów 14 Street | 39-300 Mielec**

Tel/fax: +48 17 788 68 15 Tel: +48 17 788 68 22

SAMDEX, a limited liability company located in Mielec, has made its reputation as a **European manufacturer of protection films and self-adhesive tapes** and many other solutions conformable with many branches of industry for many various kinds of application. Our enterprise dates back to 2004 and our position has been built on long-term experience of the funder. SAMDEX is the producer of high quality **protection tapes and films**. We use specialist knowledge and use innovative technology. It is our know-how and manufacturing experience that result in excellent quality and diversification of the products.

Innovative solutions and new technologies influence the rise in quality and widen the range of assortment of SAMDEX, such as:

**self-adhesive tapes and labels, self-adhesive films, protection films for PVC profiles, for automotive industry, for metal, glass, roof and floor surfaces, two-sided tapes, laser, printed, plotting and sunproof films** and many others. The main objectives of SAMDEX are competence, experience and professional advisory service. The SAMDEX team gain new customers on the world market every day, so the circle of our satisfied clients is continuously expanding.

## AUTOMOTIVE SERIES ©

### PROTECTIVE FILM FOR AUTOMOTIVE

**Carrier:** polyethylene

**Adhesive:** water-based, solvent-based, natural rubber

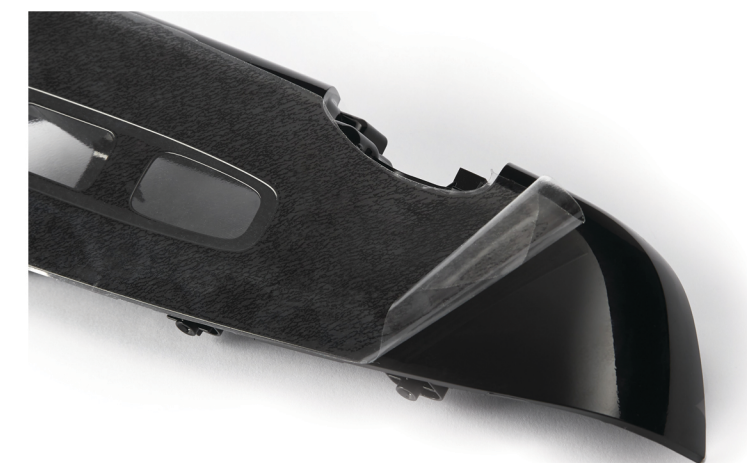
**Thickness:** 30-100 µm

**Colour options:** Transparent

**Width:** 10 - 2 500 mm

**Length:** 50 - 3 000 m

**Printing:** up to 3 colours



## Automotive Series ©

**Surface type:** Automotive plastics, textiles and carpets

**Description:** Our wide range of protective film can be used in all cars



# CONTACT US

## SAMDEX SP Z O.O.

NIP: 8171964542 | KRS: 831376609

Inwestorów 14 Street | 39-300 Mielec

Tel/fax: +48 17 788 68 15 Tel: +48 17 788 68 22

E-mail: [biuro@samdex.pl](mailto:biuro@samdex.pl)  
[www.samdex.pl](http://www.samdex.pl)



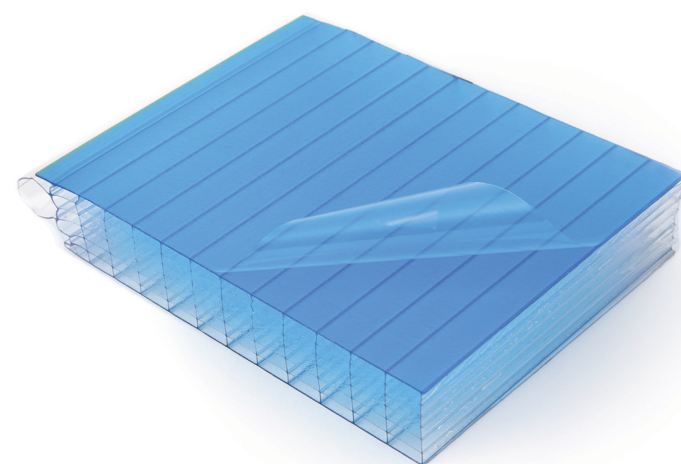
## 3500 SERIES © - 5000 SERIES © - HGP SERIES ©

PROTECTIVE FILM  
FOR PLASTIC  
AND PLASTIC SHEETS**Carrier:** polyethylene**Adhesive:** water-based, solvent-based, resins**Thickness:** 23-100 µm**Colour options:** Transparent**Width:** 10 - 2 500 mm**Length:** 50 - 3 000 m**Perforation:** available upon request**Printing:** up to 3 colours

## 3500 Series © 5000 Series © HGP Series ©

**Surface type:** Polycarbonate, PMMA, PVC, ABS, PET, PE, acrylic sheets**Description:** Good for thermoforming, very easy to remove with adhesive-free protection

## HGP SERIES ©

PROTECTIVE FILM  
FOR PLASTIC SHEETS**Carrier:** polyethylene**Adhesive:** resins**Thickness:** 17-100 µm**Colour options:** Transparent**Width:** 10 - 2 500 mm**Length:** 50 - 3 000 m**Printing:** up to 4 colours

## HGP Series ©

**Surface type:** Polycarbonate, PMMA, PVC, ABS, PET, PE, acrylic sheets**Description:** Good for thermoforming and deep drawing, very easy to remove with adhesive-free protection

## PROFILES Series ©

## PROFILES SERIES ©

PROTECTIVE FILM  
FOR WINDOWS  
PVC PROFILES**Carrier:** polyethylene, polyolefins**Adhesive:** water-based, solvent-based, rubber-based**Thickness:** 50-120 µm**Colour options:** Transparent, Black&White, White**Width:** 10 - 2 500 mm**Length:** 250 - 3 000 m**Printing:** up to 3 colours

## PROFILES Series ©

**Surface type:** PVC Window profiles**Description:** Good UV resistance, outdoor use for up to 12 months, easily removable

## PROFILES SERIES ©

### PROTECTIVE FILM FOR WINDOWS PROFILES AND WINDOWS PVC LAMINATED PROFILES

**Carrier:** polyethylene, polyolefins

**Adhesive:** water-based, solvent-based,  
rubber-based

**Thickness:** 50-120 µm

**Colour options:** Transparent, Black&White,  
White

**Width:** 10 - 2 500 mm

**Length:** 250 - 3 000 m

**Printing:** up to 3 colours



### PROFILES Series ©

**Surface type:** Windows PVC profiles

**Description:** Good UV resistance, outdoor  
use for up to 12 months, easy to remove

## OTHER Series

## PROFILES SERIES ©

### PROTECTIVE FILM FOR ALUMINIUM WINDOWS PROFILES

**Carrier:** polyethylene, polyolefins

**Adhesive:** water-based, solvent-based,  
rubber-based

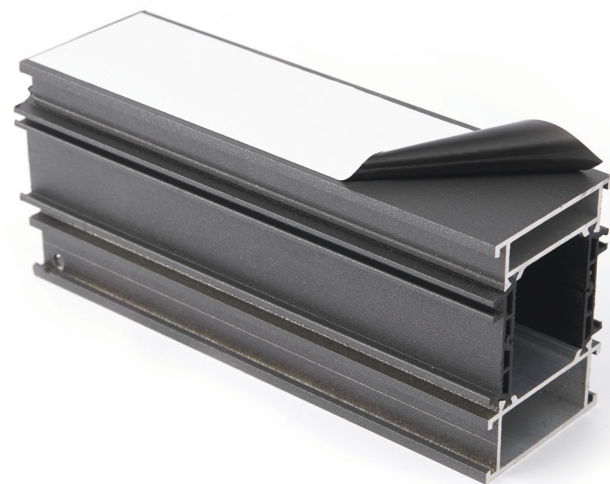
**Thickness:** 50-120 µm

**Colour options:** Transparent, Black&White,  
White, Blue

**Width:** 10 - 2 500 mm

**Length:** 250 - 3 000 m

**Printing:** up to 3 colours



### PROFILES Series ©

**Surface type:** Aluminium profiles

**Description:** Good UV resistance, outdoor  
use for up to 12 months, easy to remove

## 3500 SERIES © - 5000 SERIES © - 6000 SERIES ©

### PROTECTIVE FILM FOR METAL SURFACES

**Carrier:** polyolefins

**Adhesive:** water-based, solvent-based

**Thickness:** 25-130 µm

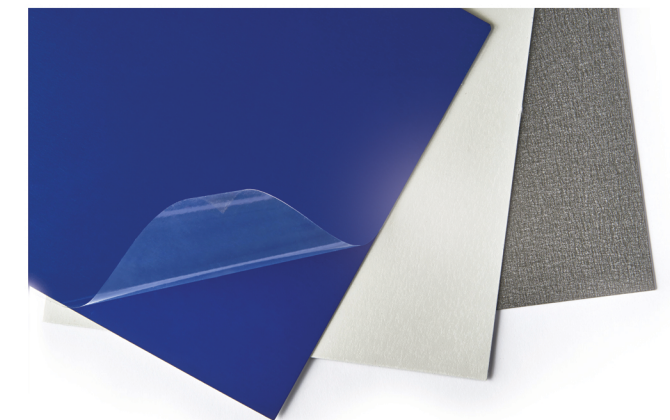
**Colour options:** Transparent

**Width:** 10 - 2 500 mm

**Length:** 100 - 1 500 m

**Perforation:** available upon request

**Printing:** up to 3 colours



### 3500 Series © 5000 Series © 6000 Series ©

**Surface type:** Painted metals

**Description:** Good UV resistance,  
interior/outdoor use, Easy Peel



## 3500 SERIES © - 5000 SERIES ©

## PROTECTIVE FILM

**Carrier:** polyethylene  
**Adhesive:** water-based  
**Thickness:** 35-130 µm  
**Colour options:** Green, Blue, Transparent  
**Width:** 10 - 1 500 mm  
**Length:** 10 - 3 000 m  
**Perforation:** available upon request  
**Printing:** up to 3 colours



## 3500 Series © 5000 Series ©

**Surface type:** High-gloss, semi-glos  
**Description:** Easy Peel

## PROFILES SERIES ©

PROTECTIVE FILM  
FOR PVC PROFILES STRIPS

**Carrier:** polyethylene  
**Adhesive:** water-based  
**Thickness:** 50-80 µm  
**Colour options:** Red  
**Width:** 10 - 1 500 mm  
**Length:** 250 - 3 000 m  
**Printing:** up to 3 colours



## PROFILES Series ©

**Surface type:** PVC profiles strips  
**Description:** Adhesive with good resistance to plasticizers

## 3500 SERIES © - 5000 SERIES ©

## PROTECTIVE FILM

**Carrier:** polyethylene  
**Adhesive:** water-based  
**Thickness:** 35-130 µm  
**Colour options:** Green, Blue, Transparent  
**Width:** 10 - 1 500 mm  
**Length:** 10 - 3 000 m  
**Perforation:** available upon request  
**Printing:** up to 3 colours



## 3500 Series © - 5000 Series ©

**Surface type:** High-gloss, semi-gloss  
**Description:** Easy Peel

## PROFILES SERIES ©

PROTECTIVE FILM  
FOR WINDOWS  
PVC LAMINATES

**Carrier:** polyethylene, polyolefins  
**Adhesive:** water-based, solvent-based, rubber-based  
**Thickness:** 50-120 µm  
**Colour options:** Transparent, Black&White, White  
**Width:** 10 - 2 500 mm  
**Length:** 250 - 3 000 m  
**Printing:** up to 3 colours



## PROFILES Series ©

**Surface type:** Laminates for PVC Windows  
**Description:** Good UV resistance, outdoor use for up to 12 months, easy to remove



PROFILES SERIES ©

PROTECTIVE PRINTED FILM  
FOR WINDOWS PROFILES

**Carrier:** polyethylene, polyolefins  
**Adhesive:** water-based, solvent-based, rubber-based  
**Thickness:** 50-120 µm  
**Colour options:** Transparent, Black&White, White  
**Width:** 10 - 2 500 mm  
**Length:** 250 - 3 000 m  
**Printing:** up to 3 colours



**PROFILES Series ©**  
**Surface type:** PVC Window profiles  
**Description:** Good UV resistance, outdoor use for up to 12 months, easy to remove

3500 SERIES © - 5000 SERIES ©

PROTECTIVE FILM

**Carrier:** polyethylene  
**Adhesive:** water-based  
**Thickness:** 35-130 µm  
**Colour options:** Green, Blue, Transparent  
**Width:** 10 - 1 500 mm  
**Length:** 10 - 3 000 m  
**Perforation:** available upon request  
**Printing:** up to 3 colours



**3500 Series © 5000 Series ©**  
**Surface type:** High-gloss, semi-gloss  
**Description:** Easy Peel

PROFILES SERIES ©

PROTECTIVE PRINTED FILM  
FOR WINDOWS PROFILES

**Carrier:** polyethylene, polyolefins  
**Adhesive:** water-based, solvent-based, rubber-based  
**Thickness:** 50-120 µm  
**Colour options:** Transparent, Black&White, White  
**Width:** 10 - 2 500 mm  
**Length:** 250 - 3 000 m  
**Printing:** up to 3 colours



**PROFILES Series ©**  
**Surface type:** PVC Window profiles  
**Description:** Good UV resistance, outdoor use for up to 12 months, easy to remove

3500 SERIES © - 5000 SERIES ©

PROTECTIVE FILM

**Carrier:** polyethylene  
**Adhesive:** water-based  
**Thickness:** 35-130 µm  
**Colour options:** Green, Blue, Transparent  
**Width:** 10 - 1 500 mm  
**Length:** 10 - 3 000 m  
**Perforation:** available upon request  
**Printing:** up to 3 colours



**3500 Series © 5000 Series ©**  
**Surface type:** High-gloss, semi-gloss  
**Description:** Easy Peel



## 3500 SERIES © - 5000 SERIES ©

PROTECTIVE FILM  
FOR WOODEN PANELS**Carrier:** polyethylene**Adhesive:** water-based, solvent-based**Thickness:** 40-130 µm**Colour options:** Red, Green, Transparent**Width:** 10 - 2 500 mm**Length:** 100 - 1 500 m**Perforation:** available upon request**Printing:** up to 3 colours

## 3500 Series © 5000 Series ©

**Surface type:** Wood, wooden panels, furniture boards, laminated boards, varnished boards**Description:** Easy Peel

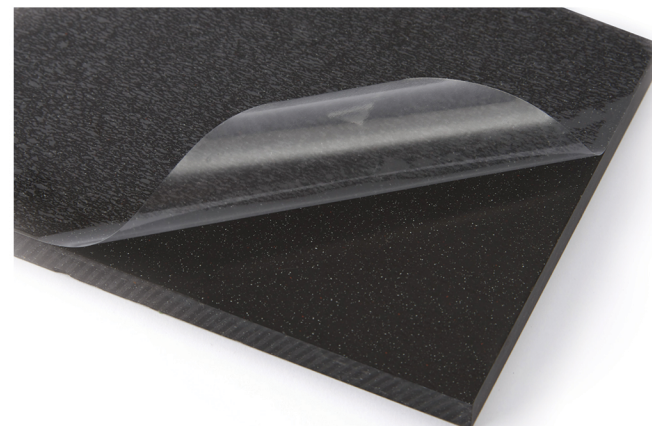
## PROFILES SERIES ©

PROTECTIVE PRINTED  
FILM FOR WINDOWS  
PROFILES**Carrier:** polyethylene, polyolefins**Adhesive:** water-based, solvent-based, rubber-based**Thickness:** 50-120 µm**Colour options:** Transparent, Black&White, White**Width:** 10 - 2 500 mm**Length:** 250 - 3 000 m**Printing:** up to 3 colours

## PROFILES Series ©

**Surface type:** PVC Window profiles**Description:** Good UV resistance, outdoor use for up to 12 months, easy to remove

## 3500 SERIES © - 5000 SERIES ©

PROTECTIVE FILM  
FOR GRANITE  
AND MARBLE**Carrier:** polyethylene**Adhesive:** water-based**Thickness:** 40-100 µm**Colour options:** Transparent**Width:** 10 - 1 500 mm**Length:** 100 - 1 500 m**Printing:** up to 3 colours

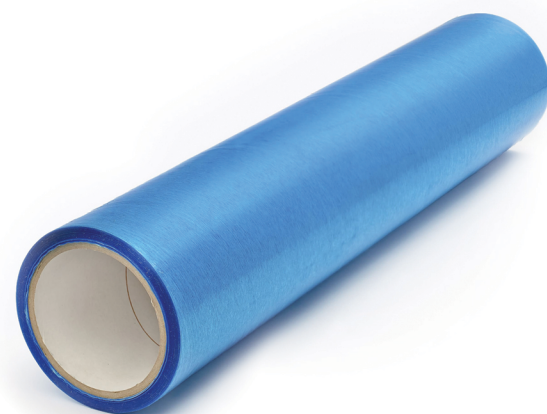
## 3500 Series © 5000 Series ©

**Surface type:** High-gloss, semi-gloss granite and marble**Description:** Easily removable, please check our**Blast Series ©** for full product range on sandblasting solutions

## DIY Series ©

### DIY SERIES ©

#### WINDOWS PROTECTIVE FILM



**Carrier:** polyethylene  
**Adhesive:** water-based, solvent-based  
**Thickness:** 30-50 µm  
**Colour options:** Blue, Green, Transparent  
**Width:** 10 - 1 500 mm  
**Length:** 50 - 3 000 m  
**Perforation:** available upon request  
**Printing:** up to 3 colours

#### DIY Series © Windows film

**Surface type:** Glass and plastic profiles  
**Description:** Good UV resistance, outdoor use for up to 6 months, easy to remove, environmentally friendly

### 3500 SERIES © - 5000 SERIES ©

#### PROTECTIVE FILM FOR FURNITURE BOARDS



**Carrier:** polyethylene  
**Adhesive:** water-based  
**Thickness:** 35-130 µm  
**Colour options:** Green, Blue, Transparent  
**Width:** 10 - 1 500 mm  
**Length:** 100 - 1 000 m  
**Perforation:** available upon request  
**Printing:** up to 3 colours

#### 3500 Series © 5000 Series ©

**Surface type:** High-gloss, semi-gloss and matte furniture boards  
**Description:** Easy Peel

### 3500 SERIES © - 5000 SERIES ©

#### PROTECTIVE FILM FOR WOOD LAMINATED BOARDS



**Carrier:** polyethylene  
**Adhesive:** water-based, solvent-based  
**Thickness:** 40-130 µm  
**Colour options:** Red, Green, Transparent  
**Width:** 10 - 2 500 mm  
**Length:** 100 - 1 500 m  
**Perforation:** available upon request  
**Printing:** up to 3 colours

#### 3500 Series © 5000 Series ©

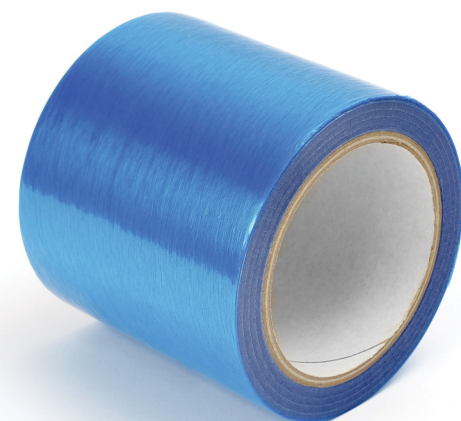
**Surface type:** Wood, wooden panels, furniture boards, laminated boards, varnished boards  
**Description:** Easy Peel



## 3500 SERIES © - 5000 SERIES ©

### 3500 SERIES ©

#### PROTECTIVE FILM



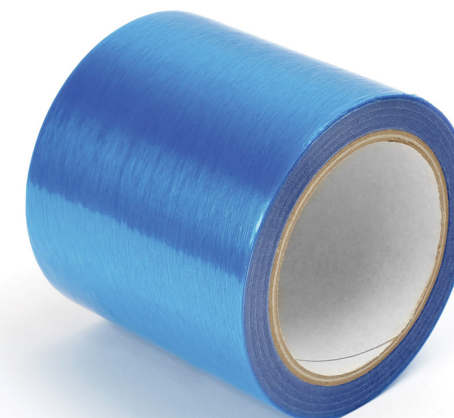
**Carrier:** polyolefins  
**Adhesive:** water-based  
**Thickness:** 25-35 µm  
**Colour options:** Blue, Transparent  
**Width:** 10 - 1 700 mm  
**Length:** 100 - 1 500 m  
**Perforation:** available upon request  
**Printing:** up to 3 colours

### 3500 Series ©

**Surface type:** Smooth painted metals, high-gloss, semi-gloss  
**Description:** Interior/outdoor use, Easy Peel

### DIY SERIES ©

#### WINDOWS PROTECTIVE FILM



**Carrier:** polyethylene  
**Adhesive:** water-based, solvent-based  
**Thickness:** 30-50 µm  
**Colour options:** Blue, Green, Transparent  
**Width:** 10 - 1 500 mm  
**Length:** 50 - 3 000 m  
**Perforation:** available upon request  
**Printing:** up to 3 colours

### DIY Series © Windows film

**Surface type:** Glass and plastic profiles  
**Description:** Good UV resistance, outdoor use for up to 6 months, easy to remove, environmentally friendly

### DIY SERIES ©

#### MULTI-USE HARD FLOOR



**Carrier:** polyethylene  
**Adhesive:** water-based  
**Thickness:** 50 µm  
**Colour options:** Red  
**Width:** 500, 600, 1 000, 1 200 mm  
**Length:** 25, 50, 100 m  
**Printing:** up to 3 colours

### DIY Series © Multi-use Hard Floor

**Surface type:** Protects nearly all surfaces  
**Description:** Perfect solution for temporary protection of various surfaces from damage during periods of heavy foot traffic associated with installation, refurbishment, renovation, building work, painting & decorating, home DIY, protection of your new kitchen, bathroom and cupboards, very easy to handle and remove

## BLAST Series ©

### BLAST SERIES ©

#### SANDBLASTING FILM



**Carrier:** PVC, PE

**Liner:** silicone paper 137g/m<sup>2</sup>

**Adhesive:** polyacrylate

**Thickness:** 250, 300, 400, 500 µm

**Colour options:** White, Cream, Green, Grey

**Width:** 610, 1220 mm

**Length:** 20, 25, 50 m

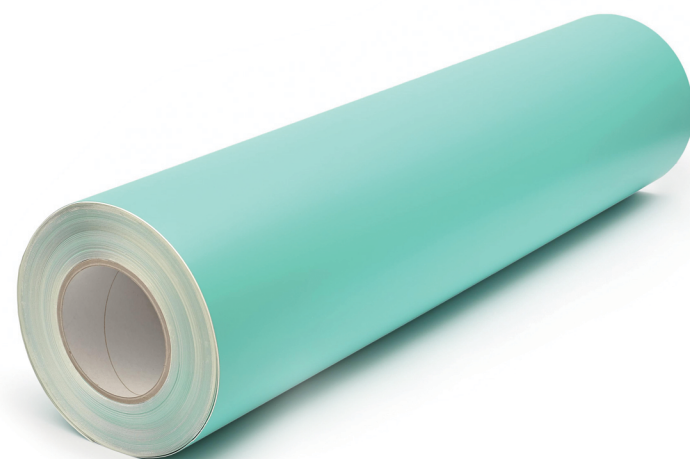
### BLAST Series ©

**Surface type:** Stone, metal

**Description:** Designed for sandblasting, this film is perfect for sandblasting work on stone and metal, the special adhesive ensures residue-free removal

### BLAST SERIES ©

#### SANDBLASTING FILM BLAST 400



**Carrier:** PVC

**Liner:** silicone paper 137g/m<sup>2</sup>

**Adhesive:** removable polyacrylate

**Thickness:** 400 µm

**Colour options:** Green

**Width:** 610, 1220 mm

**Length:** 20, 25, 50 m

### BLAST Series © Blast 400

**Surface type:** Stone, metal

**Description:** Designed for heavy-duty sandblasting, sandblasting work on smooth and polished stone